



Proudly
Produces



115 - 10th Street, Brandon Manitoba R7A 4E7 - Phone (204) 726-3590 - Fax (204) 725-0202
Toll Free 1-877-729-0001 - www.brandon.com - info@brandonfairs.com

April 20, 2010

Dear Demo Derby Drivers,

You will find attached a copy of the 2010 Demo Derby rules and regulations. I am pleased to announce that during the Manitoba Summer Fair 2010 Demo Derby we will be hosting a truck class this year.

I also wanted to express my thanks to those that came out to our driver meeting that we had in November. There was a lot of information that we got from you about how our derby is run and we look forward to making it bigger and better this year. We have taken most of your suggestions and have incorporated them into the rules this year. The changes that we have made from your suggestions are in red so please pay close attention to those. Following the derby we will be sending out a survey to get your feedback on this year's event.

Also, from our meeting we talked about how you want us to be more aggressive when enforcing the regulations. Please keep in mind that this event would not happen without our volunteers who run the event, we will be doing our best to keep it fair by enforcing the rules, but we need you to do your part and follow them. We hope this is a fun day for both you and us as volunteers and would hate to see someone who has put so much work into their car not compete that day.

Also I want to apologize for not getting these rules out to you sooner. I know I talked about having the rules out to you in January. As you are probably aware life happens and I wasn't able to deliver, so for your patience I want to say thank you.

If you have any questions or concerns about these rules please feel free to contact me at (204) 727-7729 or on my cell at (204) 724-9414 or by email at cbok@hotmail.com.

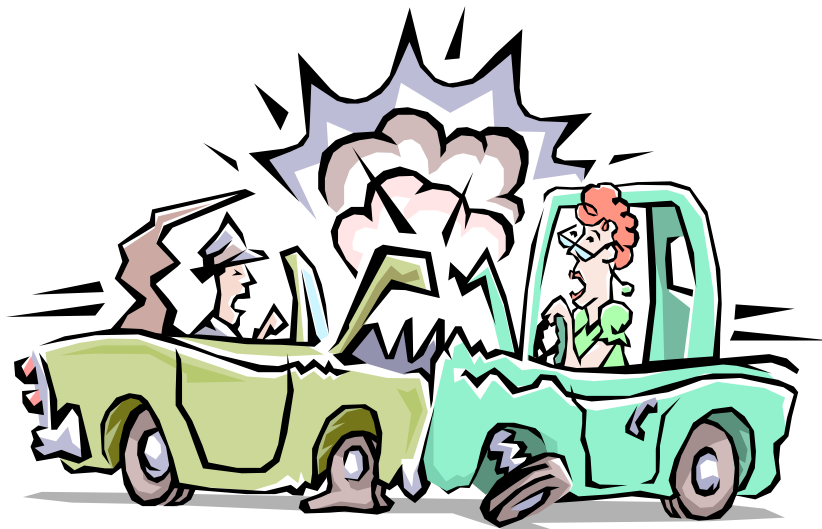
I look forward to seeing you at the derby!

Connie Bok
Manitoba Summer Fair Demolition Derby Chairperson



2010

**Manitoba Summer Fair
Demo Derby
June 13, 2010**



MANITOBA SUMMER FAIR DEMOLITION DERBY ENTRY FORM

*** ENTRY DEADLINE June 9th, 2010 ***

Complete this entry form and submit with entry fee(s).

- Regular entry - Limit 52 entries- \$50.00

Year: _____ Make: _____ Model: _____

- Special Heat - Small Car Limit 12 entries - \$35.00

* A Small Car has a GVWR less than 1525 kg.

(The committee will determine the GVWR of cars without the manufacturer's rating on the vehicle.)

Year: _____ Make: _____ Model: _____

- Special Heat – Truck – Limit 12 entries - \$35.00

Year: _____ Make: _____ Model: _____

NOTE: The entry fee includes three (3) gate passes and three (3) pit passes (driver and two (2) mechanics).

Regular Car Entry _____ x \$50.00/entry = \$ _____

Small Car Entry _____ x \$35.00/ entry = \$ _____

Truck Entry _____ x \$35.00/entry = \$ _____

Additional Pit Passes _____ x \$ 10.00/pass = \$ _____

Total = \$ _____

- I do hereby make entry for the Manitoba Summer Fair Demolition Derby hosted by Provincial Exhibition of Manitoba on Sunday, June 13, 2010 at 1:00 p.m.

- I agree to participate according to the rules of the management, and agree that their decisions are considered final.

Driver's Name: _____ **Number of car:** _____

Address: _____ **City:** _____

Province: _____ **Postal Code:** _____ **Phone:** _____

Email: _____ **FAX:** _____

Driver License Number : _____

Pit Crew : 1) _____

2) _____

3) _____

Please return to the following address with **full payment** made payable to:

PROVINCIAL EXHIBITION OF MANITOBA

Attn: Demo Derby

115-10th STREET

BRANDON, MB R7A 4E7

FOR OFFICE USE ONLY:

Ticket #'s	Date Stamp	Receipt Number

PARTICIPANTS RELEASE FORM

PROVINCIAL EXHIBITION OF MANITOBA
MANITOBA SUMMER FAIR DEMOLITION DERBY
SUNDAY, JUNE 13, 2010 AT 1:00 P.M.

THIS FORM MUST BE FILLED OUT **COMPLETELY**, AND SIGNED IN ORDER FOR AN ENTRANT TO TAKE PART IN THE SPECIFIED EVENT.

Name of Entrant: _____

Address: _____

City: _____ Province: _____ Postal Code: _____

Telephone Number: _____

In the event of accident/injury, please notify the following person:

Name: _____

Phone: _____

A. I hereby warrant and represent that I am over 18 years of age. (If applicant is under legal age, then a parent or the legal guardian having custody of the Applicant must sign the release)

B. It is hereby agreed that the undersigned will accept full responsibility, release and save harmless the Provincial Exhibition of Manitoba from all losses, injuries and damage that the Applicant may suffer and receive; and also indemnify the Provincial Exhibition of Manitoba for all losses or damages the Applicant may incur to other persons or property while participating in the event as specified above.

Signature of Entrant: _____

Dated: _____

Signature of parent or guardian (If Participant is 17 or Under):

PARTICIPANTS RELEASE FORM

MUST BE COMPLETED FOR POWDERPUFF & MECHANIC HEAT ENTRANTS

PROVINCIAL EXHIBITION OF MANITOBA
MANITOBA SUMMER FAIR DEMOLITION DERBY
SUNDAY, JUNE 13, 2010 AT 1:00 P.M.

THIS FORM MUST BE FILLED OUT **COMPLETELY**, SIGNED AND HANDED IN TO OFFICIAL AS ENTRANT ENTERS THE HEAT.

Name of Entrant: _____

Class (PowderPuff/Mechanic): _____

Address: _____

City: _____ Province: _____ Postal Code: _____

Telephone Number: _____

In the event of accident/injury, please notify the following person:

Name: _____

Phone: _____

A. I hereby warrant and represent that I am over 18 years of age. (If applicant is under legal age, then a parent or the legal guardian having custody of the Applicant must sign the release)

B. It is hereby agreed that the undersigned will accept full responsibility, release and save harmless the Manitoba Summer Fair from all losses, injuries and damage that the Applicant may suffer and receive; and also indemnify the Manitoba Summer Fair Demolition Derby for all losses or damages the Applicant may incur to other persons or property while participating in the event as specified above.

Signature of Entrant: _____

Dated: _____

Signature of parent or guardian (If participant is 17 or under):

Manitoba Summer Fair Demo Derby

General Rules & Regulations

1. **All** rules must be followed, or you will not run.
2. Registration and Pit pass fees will not be refunded in the event of a disqualifications and/or no show
3. Drivers must wear a helmet and seatbelts at all times. Seatbelts must be operable
4. **You are given 30 seconds to make a hit**, 2 minutes for restarts, and 2 minutes if you are hung up. **If hung up on outside pole barrier you will NOT be lifted off the barrier**
5. All drivers must remain in cars unless otherwise instructed by officials
6. Fireproof coveralls are suggested, as well as a neck brace (please no-one in cars wearing shorts and t-shirt) .Protect yourselves
7. **NO** alcohol in the pits. If anyone is caught with alcohol they will be disqualified. This includes your pit crew.
8. You will be given 3 pit passes: one for the driver and 2 for pit crew. Extra pit passes will cost \$10.00
9. Only 2 vehicle passes will be provided, for your service vehicles. Vehicles without a vehicle pass will **NOT** be allowed in the pit area. **“The major event sponsor will be the ONLY Commercial towing units permitted to have their lights flashing. All other towing units will not be allowed to have their lights flashing during the event.”**
10. Cars may be re-inspected after heat.
11. **ALL** drivers and crewmembers must attend the drivers meeting.
12. Any controversies will be taken up at the drivers’ meeting.
13. Do not hit the driver’s door! Sometimes this happens, but if it looks intentional or careless, you will be disqualified. Don’t use your door as a shield.
14. 2nd fire will cause disqualification for that heat only.
15. **NO** hot-rodding in the pits, keep it at an idle.
16. **NO** sandbagging or holding!!! You will be disqualified.
17. **NO** double teaming this will be strictly enforced. Only one warning then you will be disqualified.
18. **Judges’ decisions are final.** Protests will only be entertained in the following manner.
A Protest fee of \$50 will be required to protest any competing vehicle. If you want to protest a car that you think is illegal then you **MUST** put in writing and attach **\$50**. If the car is found to be illegal then you will receive your money back and the car will be disqualified, if it is legal then you will not receive your money back. Protests will not be entertained under any other circumstances. **No video footage will be considered for review**
Unacceptable or unprofessional behavior could result in ejection or disqualification
19. Any questions give us a call!!! If it doesn’t say you can do it, don’t do it.

Manitoba Summer Fair Demo Derby

Car Preparation Rules & Regulations

General

1. **All** cars must be stock, unless modification is stated in these rules
2. **Big Car Class** - Any American made sedan, or station wagons can run. No sub – frames, 4x4's, ambulances, hearses, trucks, limousines, etc. **Small Car class** - Any subcompact or mini car limited to 102 – inch wheelbase allowed. (No V-8 engines!) No AMC cars and no Volvo cars.

Stripping

1. **All** glass, (including windshield) plastic, fiberglass, chrome, and interior must be removed from car before arriving at the derby. (All decking in station wagons must be secure) You can tack it, but not solid weld it.

Tires

1. **Tires no bigger than 235/75/15 or LT tires.** No foam or cement filled etc. No steel studded tires or wheel weights allowed.
2. You may cut wheel wells for tire clearance. Fenders may be bolted back together in three places.
3. **All tires MUST be car tires or truck tires, no tractor will be allowed**

Radiators

1. Radiator must be stock, located in stock position. **Water only.** Please flush out coolant prior to derby day. This a safety as well as a environmental caution that will be strictly enforced.

Brakes

1. **All** cars **must** have working brakes.

Gas Tank

1. Original gas tanks must be removed. You must use a boat tank or well made/CSA Approved fuel cell and it must be properly secured and covered. Fuel line must be secured and fastened properly. Keep away from exhaust. Place fuel cell behind driver's seat or center of the car where the back seat used to be
2. **No plastic versions of tanks will be allowed (no jerry can made tanks)**

Doors

1. Driver's door **MUST BE PAINTED WHITE** with no numbers on the door. (this will be enforced) **NO WHITE CARS! No exceptions!! NO OTHER COLOR ON DOOR ACCEPTED!!!WHITE OR YOU CAN'T RUN.**
2. **CAR NUMBER MUST BE PAINTED ON ROOF OF CAR** to allow for better identification for officials/announcer
3. Drivers door may have a piece of flat steel 6" wide by ½" thick overlapping the seams by 6".
4. Doors maybe fastened one of the following ways:
 - i. Welded 3' then skip 6', weld 3' skip 6'etc, with 4" wide by ½" thick strips
 - ii. Chained using 3/8" chain
5. Drivers Door may have a piece of flat steel ¾" thick and 6"wide overlapping the seams by 6" inches over top of any of the above.

Trunk

1. Trunk lids may use ONE of the following be chained, wired, bolted or maybe welded same as doors weld 3' skipped 6' weld 3' skipped 6' but must have a 12x12 inspection hole

Bumper

1. Bumpers are to remain in stock, weld shocks if you like ,we don't want them to fall off.(but only weld shocks nothing else) **WE WILL BE CHECKING!!**
2. Bumpers and brackets may be fully welded on so we don't have a bunch of loose bumpers on the track. Bumper shocks can be collapsed and welded

Chassis

1. A four bar (halo) interior roll cage with four kicker bars to the floor is highly recommended. This consists of one bar along the dash and X-Frame design no more than 12" behind the driver's seat, can be from pillar to pillar. A bar along the driver side door and in the middle of the X-Frame connecting the bar along the dash and the bar behind the seat. **The Provincial Exhibition of Manitoba wants to encourage a safe event. Therefore when preparing your car for competition if you feel like there needs to be extra support to the interior roll cage to prevent injury to your driver and not impact the fairness of the competition and other drivers we encourage you to contact the Provincial Exhibition office to evaluate your alterations before competition. The Manitoba Summer Fair Demo Derby committee reserves the right to refuse alterations if they feel that it will affect other cars chances of having a fair competition.**
2. The door bar and the middle bar must not pass forward or beyond the dashboard bar or behind the front seat bar.
3. Cage may attach and cross over or under roof and is recommended. Any size bars up to 6" in diameter are acceptable.
4. Mounting plates on doors may not exceed 6" by 6". Do not attach any part of this cage to the frame. Front rear frame rails on unibody frames may be bolted to the body in one place on each frame rail.
5. Rubber spacers on factory body mounts **MUST** be factory
6. **All** trailer hitches and braces must be removed.

Hood

1. Hood maybe chained, wired, bolted, welded (weld 3' skip 6') or threaded rod, but only ONE method can be used.
2. Hoods - you may bolt your hood with up to 1 inch threaded rod or bolts. With a maximum of 6. (2 in the frame only!!!)(rods only up and down NOT sideways to the frame), **NO VARIATIONS ALLOWED** Fenders may be bolted, maximum of 3 bolts per fender (no bigger than 1 inch).

Suspension

1. Suspension must be stock. Leaf springs must be stock; you can wrap the leaf springs (no more than 3 wraps or clamps per side. You can put spacers in sagging coil springs to get your height. You can wire or weld coil springs to the rear – end housing only to prevent springs from falling out. You can loop chain or wire from rear – end to rear floor boards in 2 spots.

Power Train

1. You can tilt rear end of you wish. Welded or posi-track highly recommended.

Steering

1. You may alter your steering column to prevent loss of steering.

Electrical

1. Batteries must be moved to passenger floorboard close to transmission. It must be properly secured and covered. Industrial batteries (semi, tractor, military) maybe used if you like.

Body

1. **NO** welding of body seams.
2. **NO** reinforcing the body with extra plates of steel.
3. **NO** double skinning of sheet metal.
4. **NO** patching of rust on the entire car.

Engine & Transmission

1. Use motor and transmission of choice, motor must be in stock location. You may chain or weld motor or transmission to keep in place (don't strengthen the frame).
2. Transmission coolers allowed but must be double clamped lines or hydraulic fittings.
3. Breathers covering carburetors is mandatory, but must also have a 6" hole cut open over carburetor to assist fire officials. Do not remove air cleaner.(causes fires)
4. Tie rods, A-arms, driveshaft ,u-joints and Ball joints must be factory stock.
5. Electric fuel pumps must have a shut off switch within reach for the driver and from the outside, switch must be clearly marked on/off.
6. You can run shifter through floor and you can have a switch panel. You may also have a hand throttle. If you are running an electric fuel pump – it must be hooked up to your ignition switch – so when your car shuts off it shuts off.

Truck Preparation Rules and Regulations

1. Trucks are to be rear wheel 2X4 - 1/2 or 3/4 ton trucks. All trucks will be inspected before the derby.
2. All trucks must have their driver's door painted white
3. All glass, side and rear windows, headlights, taillights, and windshield must be removed - no rolling down windows will be tolerated.
4. Complete removal of the interior is a must. All trucks must be swept clean, including the driver's compartment and bed. No spare tires, broken glass, or trash will be allowed.
5. Battery must be relocated to the front floorboard and securely fastened, and covered. Only one battery is allowed.
6. All trucks must have radiator in stock position. If radiator is removed, you may ONLY run water in the block.
7. Side doors must be welded 3' skip 6', chained, bolted or wired, but only ONE method maybe used
8. A four-sided driver protection cage is highly recommended. Cages must not exceed 6" in front of the doors and may not extend past the cab. Cage poles must not exceed 3" in diameter.
9. Bed may have additional bolts. Rubber mounts may be removed. Factory bed floor only. Wood floor must have factory metal strips. NO steel replacement floors.
10. The back of the cab may be welded to the bed. Tailgate may also be welded to the bed. No other re-enforcing will be allowed.
11. Stock gas tank must be removed. A marine tank shall be used in it's place. Tank may be either metal or plastic, but must not hold more than six gallons of gas. The tank must be mounted in the cab or front center of the bed, and securely bolted in place. Fuel lines may be rubber or metal - lines / fittings must be leak proof. Electric fuel pumps are allowed but must have a shut-off within reach of the driver.
12. Bumpers must be stock **Automotive Bumpers**. Homemade bumpers are not allowed. Bumper shocks may be welded - no cutting bumper ends or re-enforcing bumpers. Bumpers may not exceed 21" from the ground to the bottom of the bumper.
13. All hoods must have holes over the carburetor for the fire extinguishing access. Hoods can either be chained or bolted. Hoods must be available to open for inspection.
14. All frames must remain in OEM stock - no weld zones / bumpers may be welded to frame. Don't add cable, wire, or chain tensioning in or outside the frame. Drivers caught with altered frames will not be allowed to run and will forfeit their application fee.
15. **Suspension must remain stock:**
 - A. No stiff suspension. Trucks must have original give and bounce.
 - B. No welding suspension components, including upper and lower arms, tie rods, etc...
 - C. Rear coil springs may be welded or clamped.
 - D. Trucks must have original type suspension. Do not change leaf spring trucks to coil springs, or coil spring trucks to leaf springs.
 - E. No welding leaf springs.
 - F. No adding leaves to spring assemblies. The number of spring leaves must be the same

as the manufacturer originally delivered stock, standard truck.

G. The suspension may not be modified in any way except in letter B or C above.

H. Trailer hitches must be removed. Class A or frame mounted hitches must be totally removed. Class B or bumper mounted hitches must have trailer ball and stub cut off.

I. Frame must remain stock. Absolutely no fillers inside or added re-enforcement outside the frame. Do not weld the seams. Repairs made to a broken or rusted frame must meet the approval of an official. DO NOT use camouflage materials.

16. Engine, Suspension, Rear-end Regulations:

A. Any engine / transmission may be used in any truck, but must be mounted in a stock position. On a V block engine, the front spark plug must be even with or in front of the upper ball joint. On in-line engines, the number 2 spark plug must be even with or in front of the upper ball joint.

B. Chained, welded, or homemade mounts are permitted and recommended. They must meet the approval of the officials.

C. Exhaust is preferred to be upright - out of the hood.

D. Any type of header is allowed but must be directed away from the driver's compartment and other competitors.

E. Radiators must stay in stock position and may not have anything in front of them. Radiator overflow must be directed at ground.

F. Transmission coolers are permitted. All mounting, lines, and fittings must be approved by an official.

G. Any drive shaft or u-joint may be used. Welding of the drive shaft is permitted.

H. All trucks must have working brakes.

I. ONLY gasoline and diesel fuels are allowed. NO alcohol or other alternative fuels are permitted.

17. Tires:

A. All tires and wheels must be pre-approved.

B. Implement, bar, and light truck tires are permitted - no filled tires, including foam, water, cement, etc... No chains, studs, or solid tires

C. Valve stem protectors are allowed.

GOOD LUCK TO ALL!!

Thank you to our Major Sponsor!

**WESMAN
SALVAGE**

